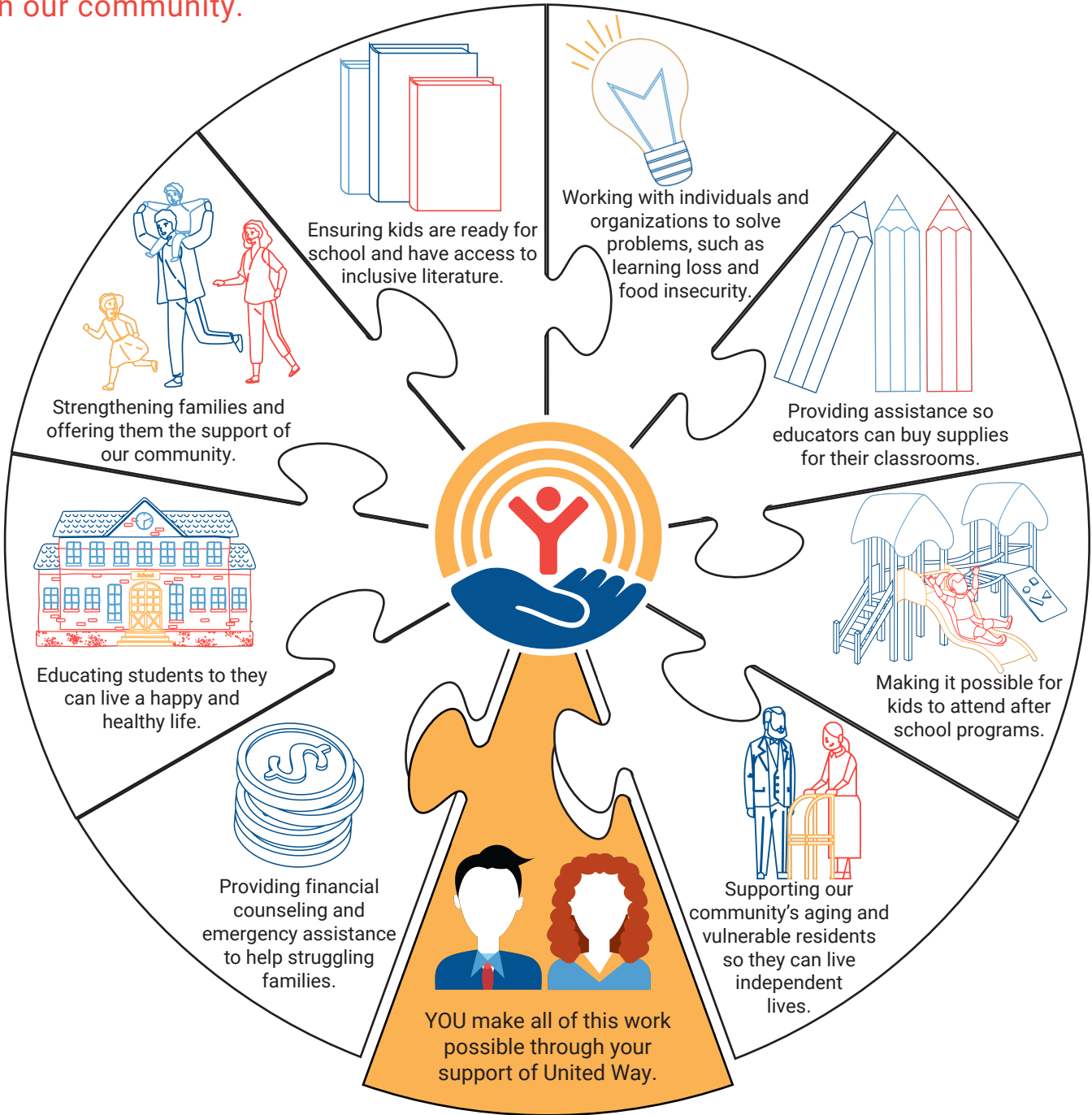


# YOU are the Essential Piece



Harvey County United Way

Your support of Harvey County United Way has a real impact on people who live right here in our community.



TO LEARN MORE VISIT [www.HarveyUnitedWay.org](http://www.HarveyUnitedWay.org)

500 N. Main St, Ste 206, Newton, KS 67114  
316.283.7101



# 2023-2024 HCUW Partner Organizations

## **Big Brothers Big Sisters of Harvey County (Education)**

1311 N Main, Newton — 316.283.0070  
Mentors for youth facing adversity needing a positive role model.

## **Cerebral Palsy Research Foundation (Health)**

5111 E 21st St, Wichita, 67208—316.688.1888  
Funded Program: Services for Harvey County residents  
Customized wheelchair seating services and funding for assistive technology/medical equipment for individuals with all types of disabilities.

## **Circle of Hope (Peace Connections) (Income Stability)**

209 S Pine (PO Box 1147), Newton —316.284.0000  
Equipping families with training, networking and Ally matches while working on specific goals to resolve poverty.

## **Hv Co Infant/Toddler Program (Education)**

816 Oak, Newton—316.284.6510  
Early intervention services to children with developmental disabilities living in rural areas of the county.

## **Health Ministries Clinic (Health)**

720 Medical Center Dr, Newton—316.283.6103  
Quality primary care with integrated behavioral health for low-income uninsured and underinsured.

## **Heart to Heart Child Advocacy Center (Health)**

702 N Main, Newton—316.804.4603  
Forensic interviewing and victim support services for abused, neglected and/or exploited children.

## **Juniper Arts Academy (Education)**

700 N Main, Wichita—316.644.7161  
Music education, including vocal and instrumental, for children in the foster care system.

## **Kansas Learning Center for Health (Education)**

505 Main St, Halstead—316.835.2662  
Funded Program: Healthy Relationships  
Provides Harvey County preschool through 1st grade students the opportunity to learn how and where produce is grown.

## **Newton Area Senior Center (Health)**

122 E 6th, Newton—316.283.2222  
Providing a fun and healthy environment for area seniors to build relationships and participate in activities.

## **Newton Clubhouse (Health)**

This start-up is meant to provide support and accountability for individuals struggling with mental health issues.

## **Newton Meals on Wheels (Health)**

122 E 6th St, Newton —316.283.3500  
Helping disabled or homebound residents (ages 60+) stay home and live healthier by delivering lunch daily.

## **NRC Clubhouse (Income)**

619 Boyd (Sunset Elem), Newton —316.283.7330  
Funded Program: Scholarships for families in need  
After school and summer childcare program at area elementary schools for children in grades K-5.

## **Offender /Victim Ministries (Health)**

900 North Poplar, Newton —316.283.2038  
Funded Program: Community Justice Programming  
Promoting accountability and healing through restorative conferencing, meditation and neighborhood accountability boards.

## **Safehope (Health)**

800 N Main #104, Newton —316.284.6920  
CRISIS LINE: 316.283.0350 Emergency shelter and services for victims of domestic and/or sexual abuse.

## **Trinity Heights Respite Care (Education)**

1200 Boyd Ave, Newton —316.283.6441  
Reliable, quality care for children (up to age 16) with special needs helping families stay vibrant and healthy.

## **Wichita Children's Home (Health)**

7271 E 37th St N, Wichita, 67226—316.684.6581  
Funded Program: Shelter for Harvey County children  
Safe place for children who are allegedly abused or need a safe place during a family crisis.



**Harvey County United Way**